

SE COR SEC 5
T17N, R62W

"P-3"

062626

RECEIVED
LARAMIE COUNTY
CHEYENNE, WY.

CERTIFIED LAND CORNER RECORDATION OCT 5 PM 3 00

DESCRIPTION OF CORNER EVIDENCE FOUND, AND ORIGINAL RECORD (IF known)

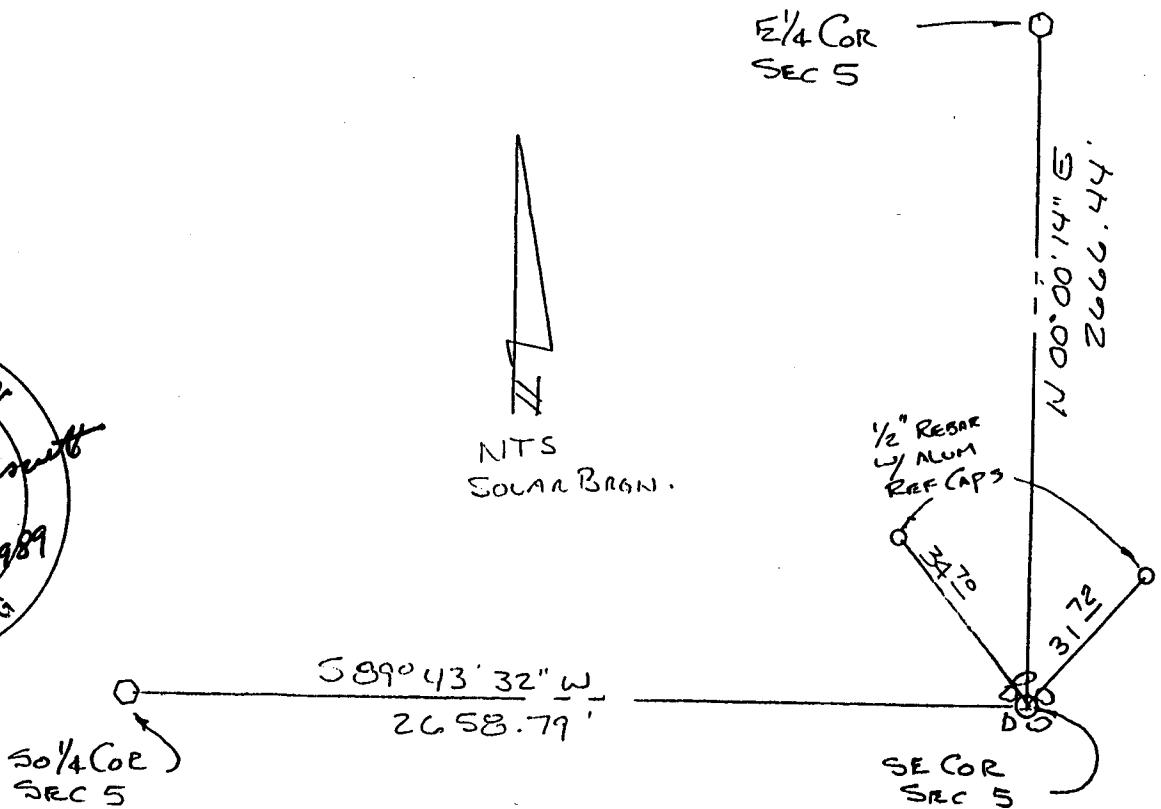
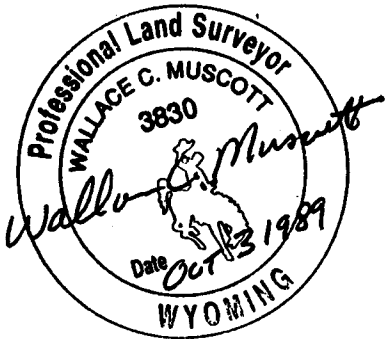
FOUND ORIG. LIMESTONE COR, Broken in 3 Pieces & EDGES WEATHERED AWAY. FALLS IN E of a FAINT N-S TRAIL FIRMLY PLANTED! THE ORIGINAL GLO CALL WAS A 18x12x10 LIMESTONE ACCEPTED THE STONE AS THE CORNER.

DESCRIPTION OF MONUMENT AND ACCESSORIES ESTABLISHED TO PERPETUATE THE ORIGINAL LOCATION OF THIS CORNER:

IN PLACE OF ORIG STONE, SET A 5/8" x 30" REBAR, w/ A CORPS OF ENGINEERS BRASS CAP AT TOP. REFERENCED AS SHOWN BELOW.

AUG 4 1989

SKETCH, WITH COURSE AND DISTANCE TO ADJACENT CORNER IF DETERMINED IN THIS SURVEY.
(May Sketch or Paste Reproduction on Reverse Side.)



I, WALLACE C. MUSCOTT certify that I have carefully performed or reviewed the work done on the diagrammed corner as reported on this recordation form and approve the same.

Wallace C. Muscott 3830
Signature of Surveyor Registration No.

STATE OF WYOMING,
Office of Clerk and Recorder,
County of _____

This "corner record" was filed for record on the _____ day of _____, 19____, was noted on the cross-index plat and is assigned page No. _____, in book No. _____.

County Official

Cross Index No. E-9 T. 17N R. 62W Mer.
____ T. _____ R. _____ Mer.
____ T. _____ R. _____ Mer.
____ T. _____ R. _____ Mer.
____ T. _____ R. _____ Mer.
____ T. _____ R. _____ Mer.
____ T. _____ R. _____ Mer.

BOOK 1278

1435